

PRODUCT ANNOUNCEMENT

15th April 2019

Announcing a series of four 640 x 480 resolution cameras Ti401 PRO, Ti480 PRO, TiX501 and TiX580 Infrared Cameras

A new full spectrum line of Fluke infrared cameras designed with the customer's challenges in mind.

Fluke is redefining the resolution standard for professional infrared cameras. All the cameras in this series offer the advantage of 640 x 480 resolution and the option of two different forms. Now customers can truly select a camera that is best suited to their operation without sacrificing resolution, ergonomics or features.



The new standard for professional thermal imaging

We recognize that it's not one approach for all—each industry, business and success measure is unique. Optimally engineered, Fluke cameras are designed to drive efficiency through the latest in thermography technology advancements. They offer everything needed for industrial professionals to safely, quickly and easily find, assess and solve mission-critical problems before they result in downtime, become costly or even disastrous.

What is new?

Ti401 PRO Infrared Cameras

The 640 x 480 resolution Fluke Ti401 PRO offers the image quality necessary to conduct inspections faster than ever before. Stay ahead of expensive downtime occurrences by capturing the best possible images the first time. With the ruggedness and ease of use that you'd expect from Fluke along with sharp, crisp images, this popular pistol grip camera offers a 3.5-inch (landscape) LCD screen for easy issue identification.

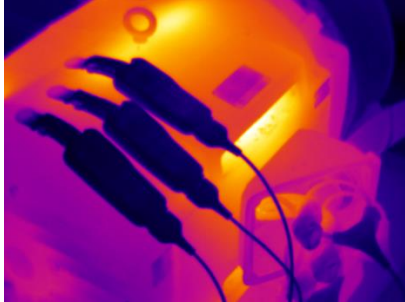
TiX501 Infrared Camera

The 307,200 (640 x 480) pixel, Fluke TiX501 thermal imaging camera offers the clarity needed to complete reliability inspections, make industrial maintenance decisions, conduct building diagnostic testing and troubleshooting. Quickly and easily frame the scene while maintaining a safer distance from operating equipment. The articulating design offers flexibility to access awkward locations without undue physical strain on the thermographer.

Ti480 PRO and TiX580 Infrared Camera – New pricing and improvements

Features and benefits:

Ti401 PRO, Ti480 PRO, TiX501 and TiX580



- Stunning 640x480 image quality for crisp, clear images, near or far.
- IR-Fusion™ technology – adjust the level of infrared and visible light for better issue identification
- Edit and analyze images on camera



- Instantly get an in-focus image with pinpoint accuracy of your target with Fluke's exclusive LaserSharp® Auto Focus technology
- Quickly and accurately determine the distance to your target with a built-in professional grade laser distance meter



Connected software platform that represents the future of integrated equipment maintenance, monitoring, analysis and reporting. It's easier than ever to optimize thermal images, perform analytics, generate quick, customizable, robust reports and export images to the format of your choice in the cloud. And you will be able to integrate with Fluke Connect — the largest system of software and wireless tools in the world. (**where applicable*)

- Intuitive navigation — easier to learn, easier and faster to work in
- Simplified work flows
- Simplified reporting workflow and better report templates
- Batch thermal image editing
- Fluke Connect Cloud storage

(**Fluke Connect™ is not available in all countries*)



Optional lenses to maximize your infrared camera's performance. Capture images close or from a distance

- Interchangeable smart lenses
- 2x telephoto
- 4x telephoto
- Macro
- Wide angle

TiX501 and TiX580



- Capture the high definition thermal images needed to complete reliability inspections, make industrial maintenance decisions, conduct building diagnostic testing and troubleshooting.
- Take advantage of analytics and reports with software that offers asset tagging, streaming infrared data, trend analysis and remote camera operation.
- 5.7-inch touchscreen LCD with on-camera analytics for in-field image analysis.

Ti401 PRO and Ti480 PRO

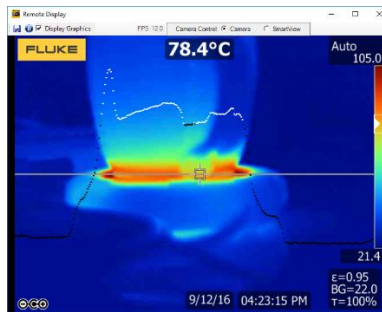


- Perform thermal imaging inspections with more confidence and faster results than ever before.
- The 640x480 resolution, Fluke Ti401 PRO offers the ruggedness and ease of use that you'd expect from Fluke along with sharper, crisper images and more exacting temperature measurements.



- Flexible and Ergonomic Form Factor
- Easily navigate over, under and around objects with full 240° rotating lens and see the image before you capture it
- Outside, the rotating screen lets you make adjustments to minimize glare, and the large 5.7 inch LCD touchscreen delivers a premium in-field viewing experience

- The popular pistol-grip design allows for one-handed use. Never lose sight of an issue with the 3.5-inch (landscape) LCD screen.
- Stream infrared data and operate the camera remotely with Fluke Connect Desktop software.



Key features for R&D users (except Ti401 PRO)

Infrared imagery and data import capabilities to MATLAB® and LabVIEW® software platforms

- Static infrared images and their data
- Streaming infrared data and its data

Customer applications:

Industrial Maintenance



**Process applications:
Oil & Gas and Chemical Processing**



Research & Development



Utilities



Job role	Industries
<ul style="list-style-type: none"> Maintenance professionals Troubleshooting technicians Preventive maintenance professionals Predictive maintenance professionals Industrial and commercial electricians I&E Technicians HVAC/R technicians Facilities managers Weatherization specialists Energy auditors Restoration and remediation professionals 	<ul style="list-style-type: none"> Industrial plants (manufacturing, process, petrochemical, etc.) Commercial buildings and facilities Government buildings Schools Hospitals Electrical, water, and natural gas utilities Residential dwellings

Basic Product Specifications:

	Ti401 PRO	Ti480 PRO	TiX501	TiX580
Infrared resolution	640 x 480 (307,200 pixels)	640 x 480 (307,200 pixels) or 1280 x 960 with SuperResolution	640 x 480 (307,200 pixels)	640 x 480 (307,200 pixels) or 1280 x 960 with SuperResolution
IFOV (spatial resolution)	0.93 mRad, D:S 1065:1			
Field of view	34 °H x 24 °V			
Temperature measurement range	-20 °C to +650 °C (-4 °F to +1,202 °F)	-20 °C to +1,000 °C (-4 °F to 1,832 °F)	-20 °C to +650 °C (-4 °F to +1,202 °F)	-20 °C to +1,000 °C (-4 °F to 1,832 °F)
MultiSharp Focus	No	Yes, focused near and far, throughout the field of view	No	Yes, focused near and far, throughout the field of view
LaserSharp Auto Focus	Yes, for consistently in-focus images. Every. Single. Time			
Fluke Connect app compatible*	Through the desktop, assign images to assets, easily compare measurement types in one location and create reports.		Future**, automatically assign images to assets, easily compare measurement types in one location and create reports through a cloud-based system.	
IR-Fusion technology	Yes, adds the context of the visible details to your infrared image			
Ruggedized touchscreen	3.5 inch (landscape), 640 x 480 LCD		5.7 inch (14.4 cm) landscape 640 x 480 LCD	
Ergonomic design	Pistol-grip design for one-handed use		240 ° rotatable (articulating) lens	

Thermal sensitivity (NETD)	≤ 0.075 °C at 30 °C target temp (75 mK)	≤ 0.05 °C at 30 °C target temp (50 mK)	≤ 0.075 °C at 30 °C target temp (75 mK)	≤ 0.05 °C at 30 °C target temp (50 mK)
Frame rate	60 Hz or 9 Hz versions			
Image file formats	bmp, jpeg, is2	bmp, jpeg, is2, is3, AVI	bmp, jpeg, is2, is3, AVI	bmp, jpeg, is2, is3, AVI
Video recording formats	No	Standard and radiometric	Standard	Standard and radiometric
IR-PhotoNotes	Yes - 2 images	Yes - 5 images	Yes - 2 images	Yes - 5 images
Remote control operations	Remote display through Fluke Connect SW or SmartView	Remote display and control operation through Fluke Connect SW or SmartView	Remote display through Fluke Connect SW or SmartView	Remote display and control operation through Fluke Connect SW or SmartView
Auto capture	No	Yes	No	Yes
MATLAB® and LabVIEW® tool boxes	--	Integrate camera data, infrared video and images into software to support R&D analysis		
User defined measurement boxes	1 expandable-contractible measurement box with MIN-MAX-AVG temp display	Up to 3 expandable-contractible measurement box with MIN-MAX-AVG temp display	1 expandable-contractible measurement box with MIN-MAX-AVG temp display	Up to 3 expandable-contractible measurement box with MIN-MAX-AVG temp display
Hard case	Rugged, hard carrying case; soft transport bag	Rugged, IP67 rated, airtight hardcase with custom foam insert		

For detailed specifications, please see the technical datasheet. *Fluke Connect is not available in all countries

**Future availability via software and firmware update.

Included with product:

Ti401 PRO FLK-Ti401 PRO 9Hz FLK-Ti401 PRO 60Hz	<ul style="list-style-type: none"> Infrared camera with standard infrared lens AC power supply and battery pack charger (including universal AC adapters) Two rugged lithium ion smart battery packs USB cable HDMI video cable 4GB micro SD card Adjustable hand strap Available for free download: SmartView/ Fluke Connect™ desktop software and user manual Carrying case: <ul style="list-style-type: none"> Ti401 PRO: rugged, hard carrying case along with a soft transport bag Ti480 PRO: rugged, IP67 rated, airtight hard carrying case TiX501, TiX580: a rugged, IP67 rated, airtight hard carrying case and an adjustable neck strap
Ti480 PRO FLK-Ti480 PRO 9Hz FLK-Ti480 PRO 60Hz	
TiX501 FLK-TiX501 9Hz FLK-TiX501 60Hz	
TiX580 FLK-TiX580 9Hz FLK-TiX580 60Hz	

Introduction schedule:

- Open for Orders: **15th April, 2019**
- Public Embargo: **Immediate**
- ATP/ Lead time: **6 weeks**

Service plan:

- Standard two-year warranty
- Service will be provided at the Fluke Service Centers

Product pricing and ordering information:

Fluke Model	Description	P/N	UPC codes	COO	FSEA List (BAHT)
Ti401 PRO 60 Hz	FLK-TI401-PRO 60HZ,THERMAL IMAGER; HS1; 60 HZ	5085041	0 95969 90944 0	US	322,770
Ti401 PRO 9 Hz	FLK-TI401-PRO 9HZ,THERMAL IMAGER; HS2; 9 HZ	5085052	0 95969 90945 7	US	322,770
Ti480 PRO 60 Hz	FLK-TI480-PRO 60HZ, THERMAL IMAGER; 640X480	4947326	0 95969 86269 1	US	461,120
Ti480 PRO 9 Hz	FLK-TI480-PRO 9HZ, THERMAL IMAGER; 640X480	4947332	0 95969 86270 7	US	461,120
TiX501 60 Hz	FLK-TIX501 60HZ, THERMAL IMAGER; HS1; 60 HZ	5085119	0 95969 90950 1	US	544,660
TiX501 9 Hz	FLK-TIX501 9HZ, THERMAL IMAGER; HS1; 9 HZ	5085128	0 95969 90951 8	US	544,660
TiX580 60 Hz	FLK-TIX580 60HZ, THERMAL IMAGER; 640X480	4842073	95969 83522 0	US	693,210
TiX580 9 Hz	FLK-TIX580 9HZ, THERMAL IMAGER; 640X480	4841945	0 95969 83516 9	US	693,210

****These new products will need to be added to your existing Hi-touch list.**

Product family for the above thermal imagers: TI

Model group for the above thermal imagers: Ti401 PRO, Ti480 PRO: GEM
TiX501, TiX580: ORIO

ECCN for the above thermal imagers: 9Hz models: 6A993. For 60 HZ Models: 6A003.b.4.b

Optional accessories:

Fluke Model	Description	P/N	UPC codes	COO	FSEA List (BAHT)
FLK-TIX5Xx-HDMI	HDMI Cable	4615511	0 95969 78071 1	CN	5,460
FLK-TI-SBP4	FLUKE-TIX5XX,SBP4,FLUKE-TIX5XX SMART BATTERY PACK	4597142	0 95969 78054 4	CN	6,970
FLK-TIX5xx-Neck	FLUKE-TIX5XX-NECK, FLUKE-TIX5XX-NECKSTRAP	4574715	0 95969 78069 8	CN	2,390
FLUKE-TIX5xx Hand	FLUKE-TIX5XX HAND, FLUKE-TIX5XX HANDSTRAP	4574703	0 95969 78070 4	CN	1,660